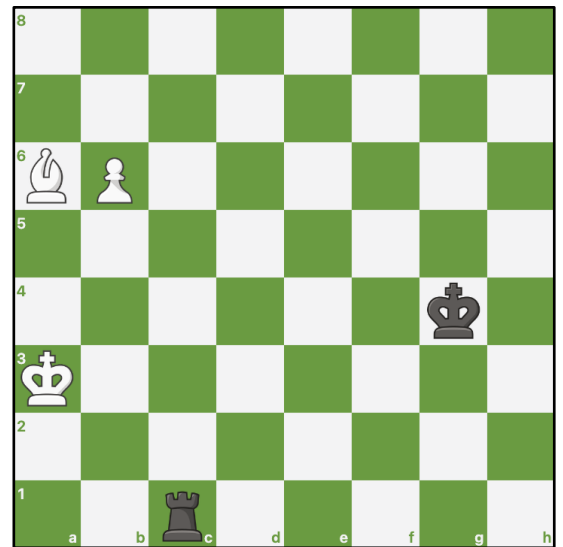


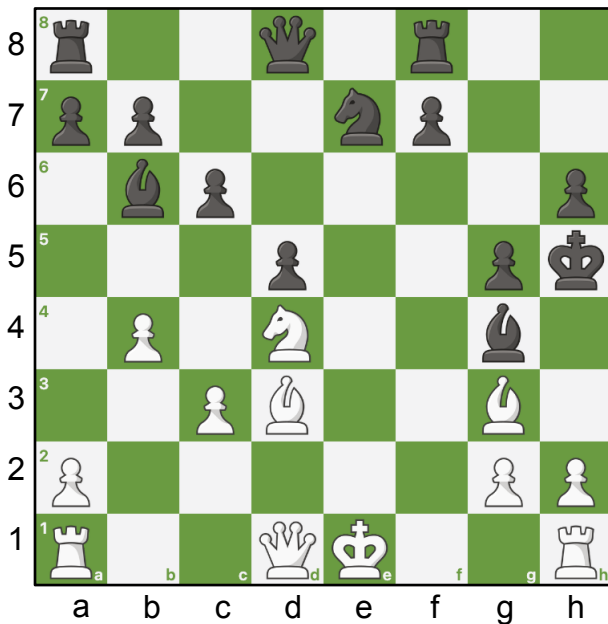
117. Stoppable?

It's white's move, but black can get a draw just by trading off the last remaining pawn. Is there a way for white to promote the pawn, or is it always stoppable?

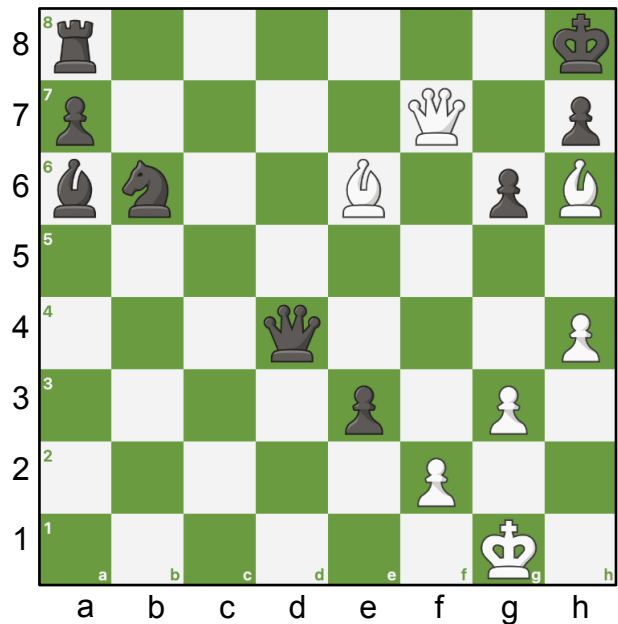


Challenge Puzzles

① White to play - Find best move.



② White to play - Find best move.



Hints.

- ① Start with the queen.
- ② Start with a bishop.

Answers.

① 1. ♔xg4+ ♚xg4 2. ♗e2#

② 1. ♗f8 ♔a1+ 2. ♚h2 ♔h1+ 3. ♚xh1 ♗b7+ 4. ♚h2 ♜g5 5. ♔g8#

