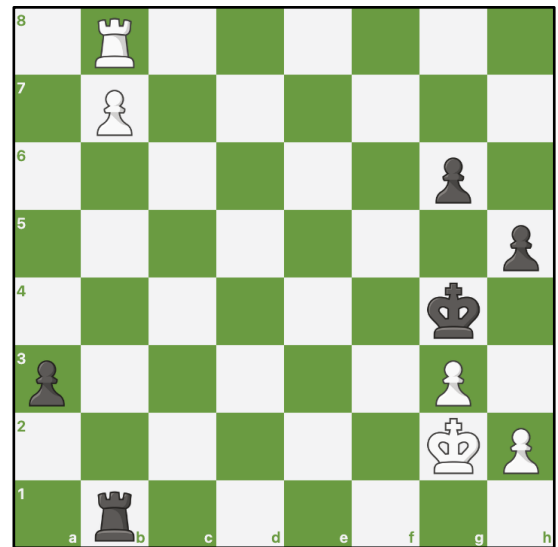


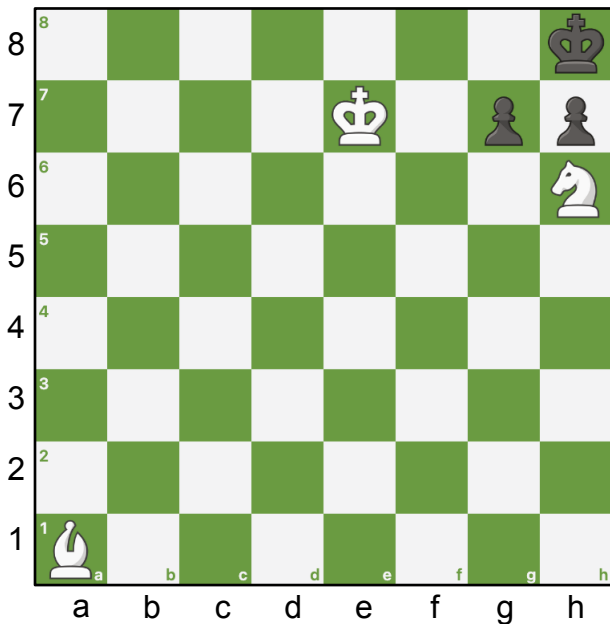
115. Can you promote the pawn?

In this position, white would like to push the pawn to promotion, but the white rook is in the way. Does black have any way to push for a win?

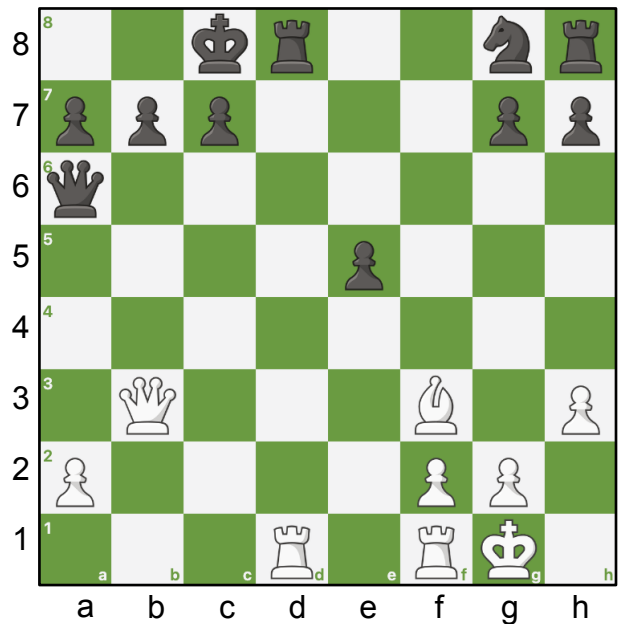


Challenge Puzzles

① White to play - Find best move.















② White to play - Find best move.



Hints.

- ① Start with the bishop.
- ② Start with the bishop.

Answers.

- ① 1.  f6  gxf6 2.  f8  f5 3.  f7# Bonus question: Is this position even possible? What move could black have just played?
- ② 1.  xb7+  xb7 2.  e6+  d7 3.  e8+  d8 4.  xd8#

