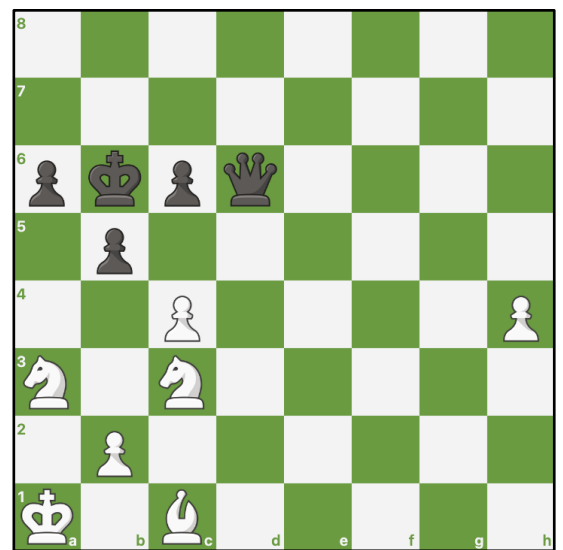


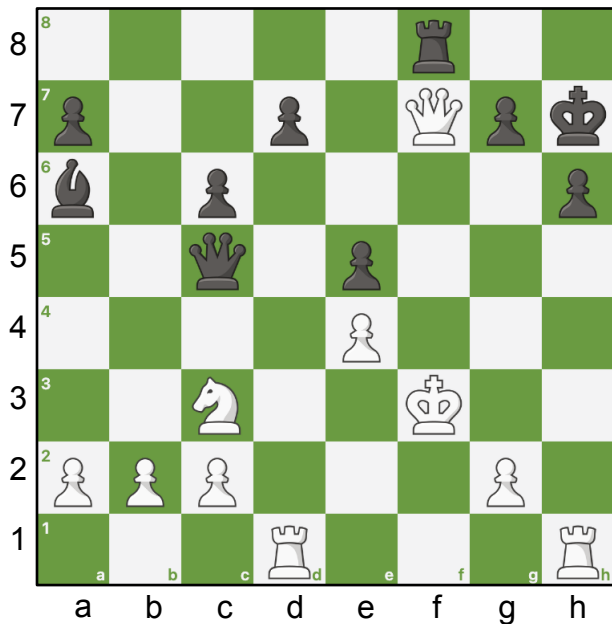
109. Balanced?

With three pieces for the queen, things look balanced materially. Which side wins with best play? It's white to move.

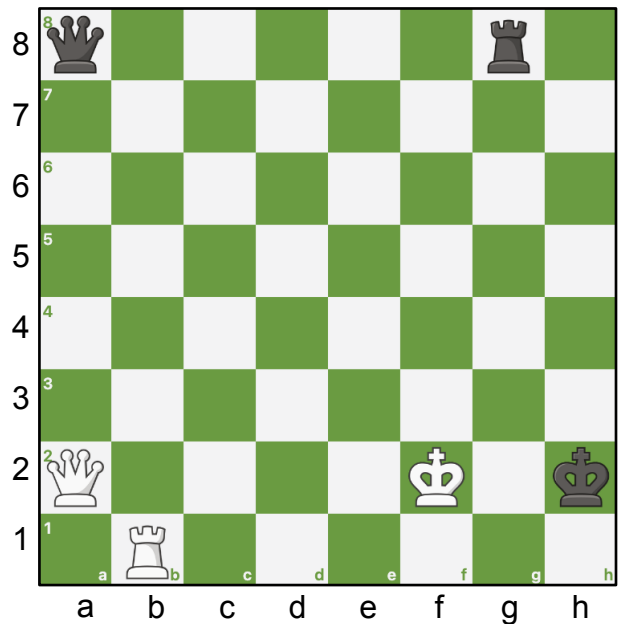


Challenge Puzzles

① White to play - Find best move.



② White to play - Find best move.



Hints.

- ① Start with a rook.
- ② Start with the rook.

Answers.

① 1. ♖xh6+ ♔xh6 2. ♖h1+ ♔g5 3. ♖h5#

② 1. ♖h1+ ♔xh1 2. ♕xg8 ♕e1+ 3. ♔xe1 ♔h3 4. ♕g5 ♔h2 5. ♔f2 ♔h1 6. ♕g1#

