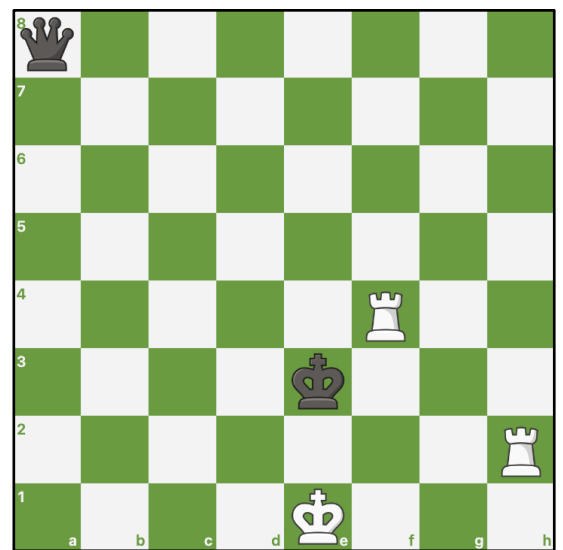


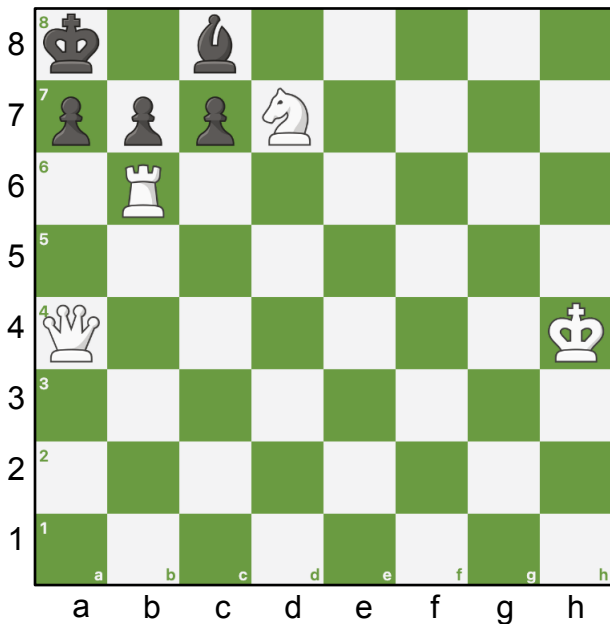
107. Who is Winning?

It is white to play. The two rooks are strong, but the white king is in a vulnerable position. Which side is winning?

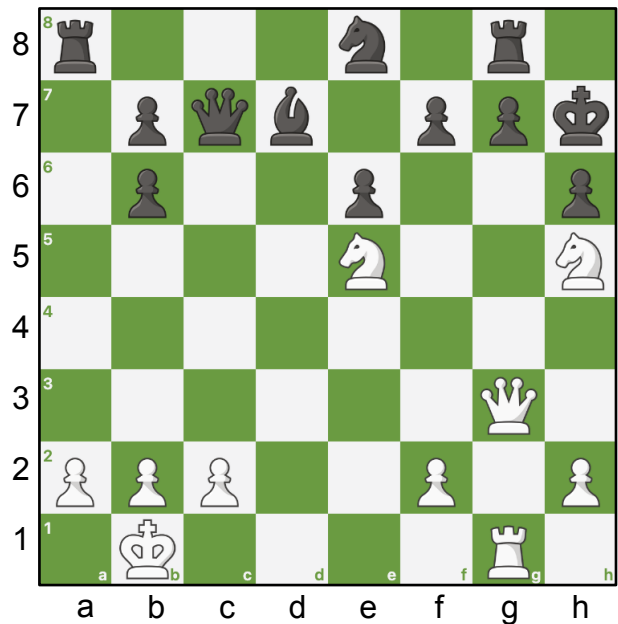


Challenge Puzzles

① White to play - Mate in 2.



② White to play - Find best move.



Hints.

- ① Start with the queen.
- ② Start with the queen.

Answers.

① 1. ♔c6 ♟bxc6 2. ♖b8#

② 1. ♔xg7+ ♜xg7 2. ♜xg7+ ♞xg7 3. ♞f6+ ♔h8 4. ♞xf7#

