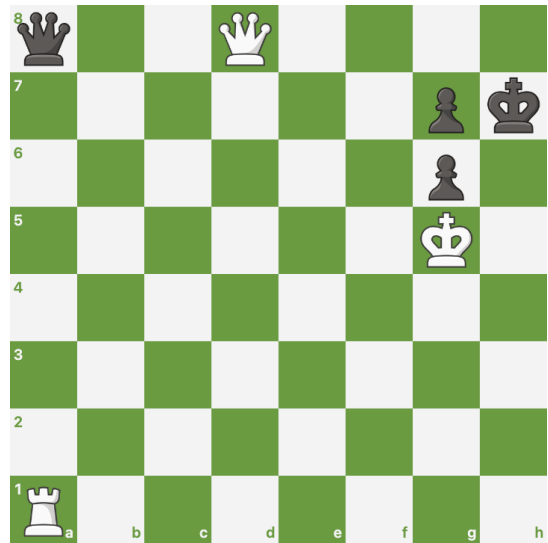


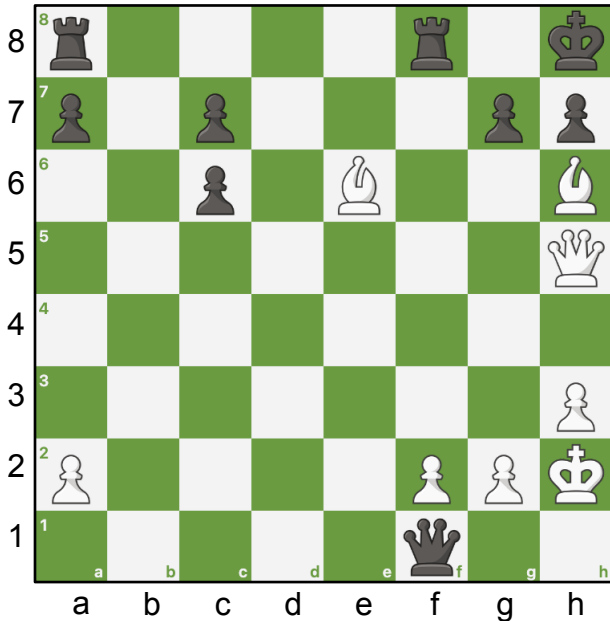
104. Only One

White would like to finish off the black king, but the black queen is perfectly positioned to stop any useful moves for white. Only one move allows white to prevail.

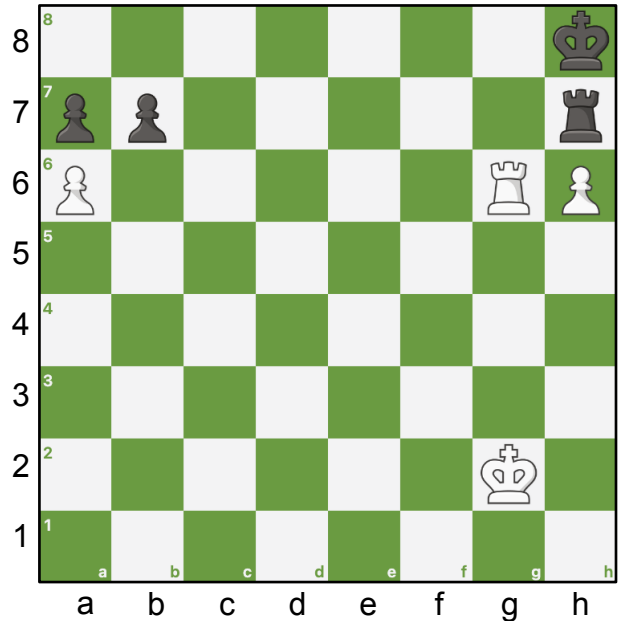


Challenge Puzzles

① White to play - Find best move.















② White to play - Find best move.



Hints.

- ① Start with a bishop.
- ② Start with the rook.

Answers.

- ① 1. xg7+ xg7 2. g5+ h8 3. e5+ f6 4. xf6#
- ② 1. b6 axb6 2. a7 xh6 3. a8=